

# MERMENTAU RIVER HARBOR AND TERMINAL DISTRICT



**LOCATION** – One mile north of U.S. Hwy 90 and one mile east of the Village of Mermentau on the Mermentau River

**ORGANIZATION** – The Mermentau River Harbor and Terminal District was created by Act No. 196 of the 1976 regular session of the Louisiana Legislature. It is governed by board of commissioners consisting of 7 members who serve for a 5-year term. The Mermentau River Harbor and Terminal District is a political subdivision of the state of Louisiana, and its territorial limits extend to the limits of Ward 5 of Acadia Parish.

## PORT COMMISSIONERS

Stephen Broussard	Darla Istre	Robert Dale Thibodeaux
Donlean Gary	Richard Myers	
Keith Henry	Karlon Thibodeaux	

## PORT PRESIDENT

Stephen Broussard      W 337/433-3632  
P.O. Box 292              fax 337/436-3727  
Estherwood, LA 70534    C 337/581-3369  
E-mail stbroussard@la.gov

## PRIMARY CARGOES

Inbound – Aggregates, fertilizer, rough rice and rice hull compost  
Outbound – Grain (rice and soybeans)

**OVERALL ANNUAL TONNAGE (2009)** – 143,523.00 tons

## REVENUES (2009)

Gross Operating Revenue	\$18,388.26
Tax and Other Revenues	\$59,183.24
<b>TOTAL GROSS REVENUES</b>	<b>\$77,571.50</b>

**TOTAL EMPLOYEES** – One part time bookkeeper

**MAIN CHANNEL DEPTH** – 9 foot draft

**CRUISE TERMINALS & FACILITIES** – N/A

## CARGO TERMINALS & FACILITIES

Port Aggregates, Inc.

Leases 7.706 acres of water front property  
Average annual tonnage 80,000 tons  
Primary product is aggregates

Mid State Sand & Gravel, Co., Inc. dba Diamond B

Leases 10.7474 acres  
Average annual tonnage 28,000 tons  
Primary product is aggregates

Acadiana Export Service, Inc.

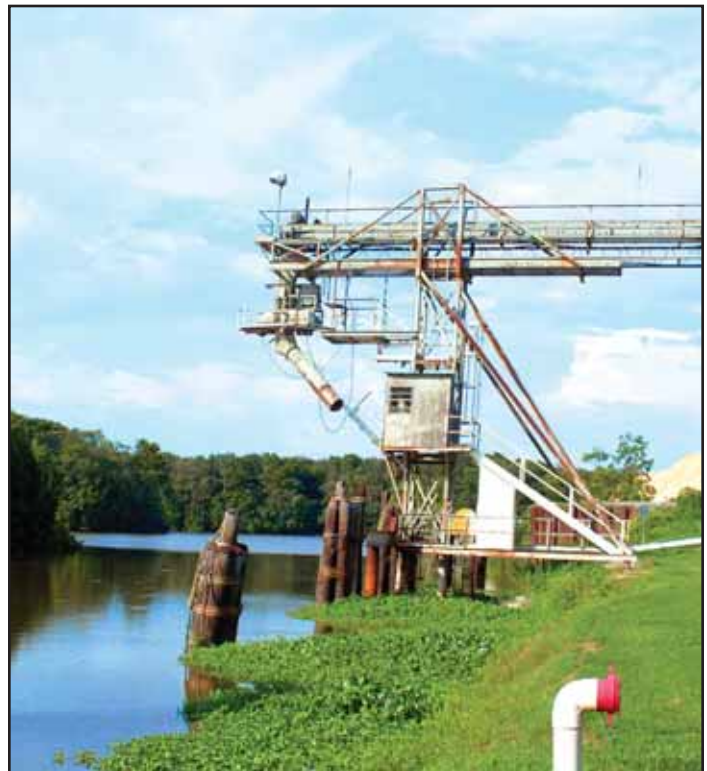
Leases 12.5563 acres  
Average annual tonnage 1,000 tons  
Primary product is rice hull compost

Bunge, Inc.

Owns approx. 10 acres adjacent to the port's slip  
Average annual tonnage 11,000 tons  
Primary products are soybeans, rough and clean rice.

**OTHER PORT-OWNED BUSINESSES, SERVICES AND FACILITIES** – Slip, service road and 12 acres of land

**OTHER PORT AREA SERVICES** – N/A



## MERMENTAU RIVER HARBOR AND TERMINAL DISTRICT (PORT OF MERMENTAU)

P.O. Box 1305, Crowley LA 70527-1305 • Tel: 337/785-1000 Fax: 337/785-2000 • stbroussard@la.gov