

COLUMBIA PORT COMMISSION



LOCATION – Six miles north of Columbia, Louisiana on the west side of LA Highway 165 and 25 miles south of Monroe, Louisiana on the Ouachita River.

ORGANIZATION – The Columbia Port Commission was created by R.S. 34:1901. It is governed by board of commissioners consisting of 5 members who serve for a 5-year term.

PORT COMMISSIONERS

Marshall Davis, Jr. Darron McGuffee Charlie Mac Rowland
Bruce Frazier Charles “Buddy” Page



PORT STAFF

Greg Richardson - Port Contact

PRIMARY CARGOES

Inbound – None
Outbound – Cottonseed and grain

OVERALL ANNUAL TONNAGE 2007 – 200,000 tons

REVENUES (2008)

Gross Operating Revenue	\$ 40,000
Tax and Other Revenues	\$150,000
TOTAL GROSS REVENUES	\$190,000

TOTAL EMPLOYEES – N/A

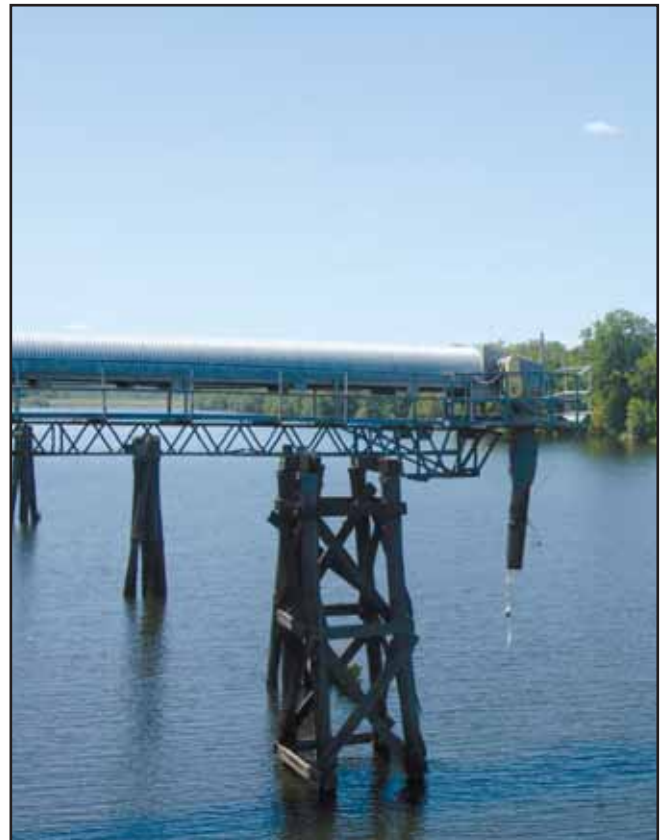
MAIN CHANNEL DEPTH – 9 foot draft

CARGO TERMINALS & FACILITIES

1. 60-acre site for development
2. 130,000 bu. capacity grain storage with 66 ft. dump over 100,000 lb. scales
3. Conveyor system for loading trucks and barges
4. 36,000 sq. ft. storage warehouse – 22 ft. eave ht. with dump pit conveyors – air system
5. 100,000 bd. ft. kiln dryer with storage building and lay down yard
6. 5,000 sq. ft. office building
7. Rock yard with 5-acre lay down and unloading
8. 20,000 sq. ft. cottonseed warehouse
9. Barge loading/unloading area

OTHER PORT AREA SERVICES – N/A

OTHER PORT-OWNED BUSINESSES, SERVICES AND FACILITIES – N/A



COLUMBIA PORT COMMISSION (PORT OF COLUMBIA)

P.O. Box 367, Columbia LA 71418 • Tel: 318/649-0101 • Fax: 318/649-0203