

LAKE PROVIDENCE PORT COMMISSION



LOCATION – The Port of Lake Providence is located on the Mississippi River at mile 484 A.H.P. in the northeast corner of Louisiana in East Carroll Parish, two and one half miles south of Lake Providence on U.S. Highway 65. The port’s legislated jurisdiction consists of the entire parish of East Carroll.

ORGANIZATION – The Lake Providence Port Commission was created by Act 450 (R.S. 1501 et seq.) of the 1958 regular session of the Louisiana Legislature. It is governed by a board of commissioners consisting of 7 members who serve for a 6-year term without compensation. Regular meetings are held monthly on the third Wednesday at 8:00 A.M.

The Commission regulates the commerce and traffic within the port area for the best interest of the state. Title to all property and improvements operated by the commission is vested in the State of Louisiana.

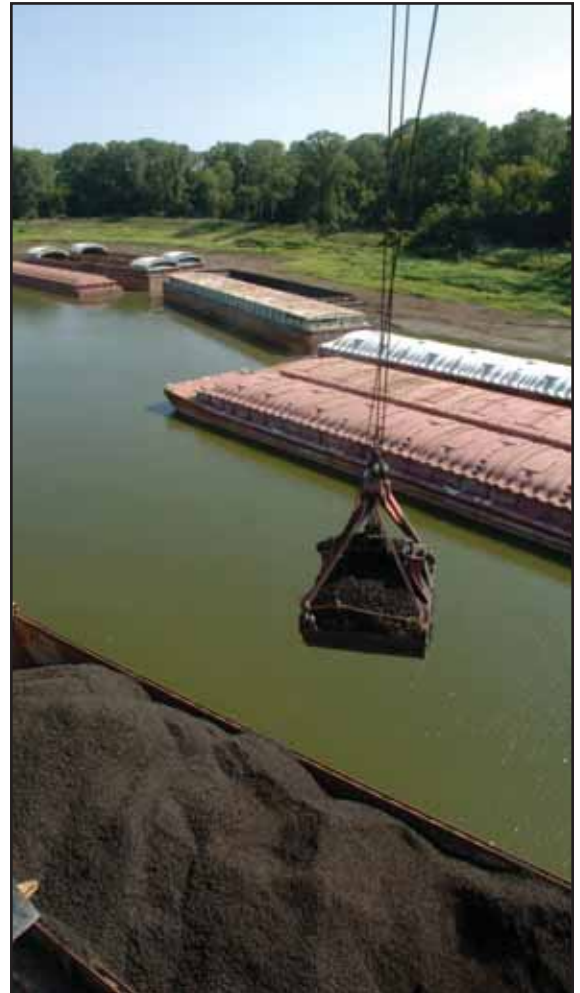
The Port is managed under a corporate style approach. The Board of Commissioners is responsible to the East Carroll Parish Police Jury, the Town of Lake Providence, the citizens of East Carroll Parish and the State of Louisiana for the safe, sound and constructive operation of the Port.

PORT COMMISSIONERS

Roger Clement	Francis Lensing	Prince Robinson
Jerry King	Wallace Oliver	James Thom

PORT STAFF

W. Wyly Gilfoil, Sr., Port Director
Lee Denny, Deputy Port Director
James C. Crigler, Jr., Port Attorney
Alan D. Krouse, P.E., Port Engineer



PRIMARY CARGOES

Inbound – Aggregates, dry & liquid fertilizer, forest products, lime, tire chips
Outbound – Succinic acid, grain

OVERALL ANNUAL TONNAGE

5 Year Average in excess of 1 million tons/year

TOTAL EMPLOYEES – 2

MAIN CHANNEL DEPTH – The Port is a shallow draft port with a Corps of Engineers maintained channel depth of 9 feet, however channel depth usually exceeds 12 feet with the exception of the low water period in late summer and early fall.

LAKE PROVIDENCE PORT COMMISSION (CONT.)

CARGO TERMINALS & FACILITIES

General Cargo Pier: Port owned, operated by Terral RiverService; Cargo: bulk & breakbulk; Berths: 1; Face: 50 feet; Sides: 220 feet; Depth: 9 feet; Mechanical Handling Facilities: 75 ton crawler crane with 4 cubic yard clamshell bucket; conveyor belt, 36 inch x 690 feet with radial stacker connection to a 72,000 square foot concrete storage pad; Rail extends to the end of the dock; Certified rail & Truck scales; 2-20,000 sq. ft. warehouses, 1-4,800 sq. ft. warehouse.

General Cargo Ramp: Port owned, operated by Terral RiverService; Cargo: bulk & breakbulk; Berths: 1; Face 400 feet; Depth: 9 feet; Mechanical Handling Facilities: 75 ton crawler crane with 4 cubic yard clamshell bucket.

Bunge Corp. Dock: Bunge owned & operated; Cargo: grain; Berths: 1; Face: 30; Depth: 9 feet; Mechanical Handling Facilities: 30 inch electric belt conveyor connected to 1.2 million bushel storage.

CHS Dock: CHS owned & operated; Cargo: aggregate, dry fertilizer and ag lime; Berths 1; Face: 295 feet; Sides: 25 feet; Depth: 9 feet; Mechanical Handling Facilities: 30 ton crawler crane with clamshell bucket; conveyor belt to 24,000 ton warehouse used for dry fertilizer storage; 100,000 ton open storage area.

Big River Rice & Grain Dock & Liquid Fertilizer Terminal: BRRG owned & operated; Cargo: grain and liquid fertilizer; Berths: 2; Face: 600 feet; Depth: 9 feet; Mechanical Handling Facilities: 48 inch electric conveyor belt extends from bottom dump pit to end of dock; 8 inch liquid fertilizer pipeline connects to 6-1,000,000 gallon liquid storage tanks (owned by the Port, 3 operated by CPS and 3 by Helena).

Myriant Bio Refinery

OTHER PORT-OWNED BUSINESSES, SERVICES AND FACILITIES

Certified Truck Scales

Cottonseed Storage – 2-21,000 square feet

Muskogee warehouses with truck dump.

Rail – 9,900 feet of Port owned track

37 acres of land available for industrial use
landside of the levee

OTHER PORT AREA SERVICES

Barge mooring & fleetling

Certified rail scales

Rail switching

Towing and tug services

Warehousing and laydown area



LAKE PROVIDENCE PORT COMMISSION (PORT OF LAKE PROVIDENCE)

409 Port Road, Lake Providence, LA 71254 • Tel: 318/559-2365 LakeProvidencePort.com • wyly_gilfoil@msn.com