

MERMENTAU RIVER HARBOR AND TERMINAL DISTRICT



LOCATION – One mile north of U.S. Hwy 90 and one mile east of the Village of Mermentau on the Mermentau River

ORGANIZATION – The Mermentau River Harbor and Terminal District was created by Act No. 196 of the 1976 regular session of the Louisiana Legislature. It is governed by board of commissioners consisting of 7 members who serve for a 5-year term. The Mermentau River Harbor and Terminal District is a political subdivision of the state of Louisiana, and its territorial limits extend to the limits of Ward 5 of Acadia Parish.

PORT COMMISSIONERS

Robert Dale Thibodeaux, President Karlon Thibodeaux
Keith Henry Shannon Gaspard
Chance Henry

PORT LIASON

Stephen Broussard Cell 337-581-3369
E-mail: stephen.broussard1@gmail.com

PRIMARY CARGOES

Inbound – Aggregates, fertilizer, rough rice
Outbound – Grain (rice and soybeans) and rice hull compost

OVERALL ANNUAL TONNAGE (2012) –62,000 tons
REVENUES (2014)

Gross Operating Revenue	\$22,250
Tax and Other Revenues	\$65,300
TOTAL GROSS REVENUES	\$87,550

TOTAL EMPLOYEES – One part time bookkeeper

MAIN CHANNEL DEPTH – 9 foot draft

CRUISE TERMINALS & FACILITIES – N/A

CARGO TERMINALS & FACILITIES

Port Aggregates, Inc.

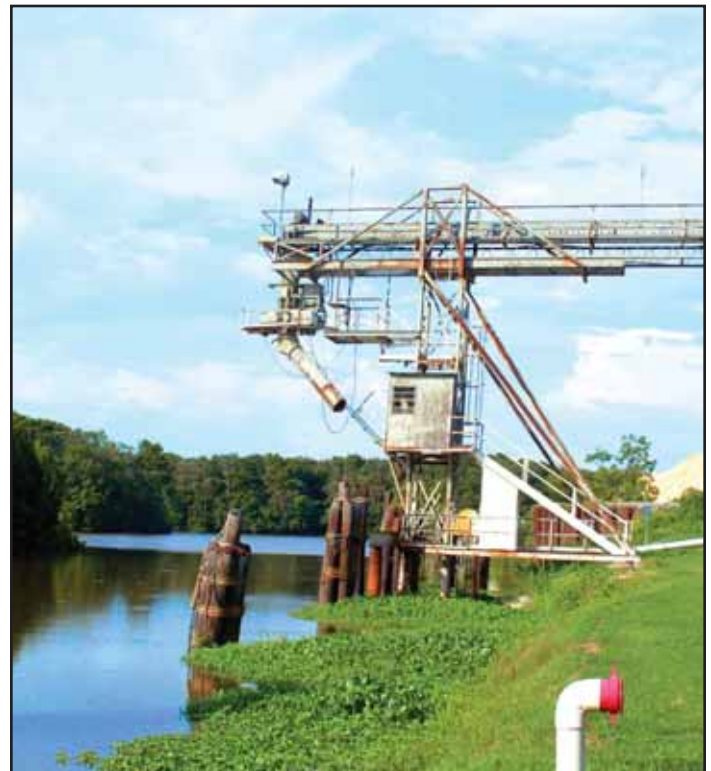
Leases 7.706 acres of water front property
Average annual tonnage 80,000 tons
Primary product is aggregates

Mid State Sand & Gravel, Co., Inc. dba Diamond B

Leases 10.7474 acres
Average annual tonnage 28,000 tons
Primary product is aggregates

OTHER PORT-OWNED BUSINESSES, SERVICES AND FACILITIES – Slip, service road and 12 acres of land

OTHER PORT AREA SERVICES – N/A



CHS, Inc.

Owns approx. 10 acres adjacent to the port. Average annual tonnage 15,000 tons.
Leading global agribusiness owned by farmers, ranchers & cooperatives across the US. Diversified in energy, grains and foods. They are committed to helping customers, farm owners and other stakeholders grow their businesses through domestic and global operations.

MERMENTAU RIVER HARBOR AND TERMINAL DISTRICT (PORT OF MERMENTAU)

P.O. Box 1305, Crowley LA 70527-1305 • Tel: 337-785-1000 Fax: 337-785-2000 • portofmermentau.com